

PMP Replacement Kit For Wayne® QVGA Display

Thank you for purchasing the enclosed PMP retrofit display.

This display is designed and manufactured by PMP as a replacement for the Wayne® QVGA display (892131-001 which replaces 889873-R01). The kit includes:

- (1) LCD
- (4) #4 Mounting screws
- (1) 24VDC Expansion Cable (depending on part number ordered)



READ THIS GUIDE BEFORE YOU BEGIN

Dispensers have both electricity and hazardous, flammable and potentially explosive liquid. Failure to follow the precautions below and instructions in this guide may result in serious injury and death. Follow all rules, codes and laws that apply in your area.



SAFETY PRECAUTIONS FOR INSTALLATION AND MAINTENANCE

- Only a person with knowledge and experience with gasoline dispensing equipment should perform this work.
- Barricade the work area with your truck and / or other appropriate means.
- Always make sure ALL power to the dispenser is turned OFF before you open the dispenser cabinet for maintenance. Physically lock and tag out the circuit breakers energizing the dispenser following OSHA guidelines.



- Note that more than one disconnect switch may be required to de-energize the dispenser for maintenance and servicing. Use a voltmeter to make sure ALL circuits in the dispenser are de-energized. Failure to do so may result in serious injury.



- Know how and where to turn OFF power to the submersible pumps in case of emergency.



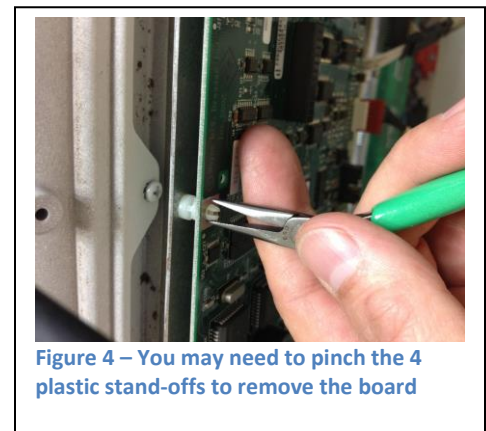
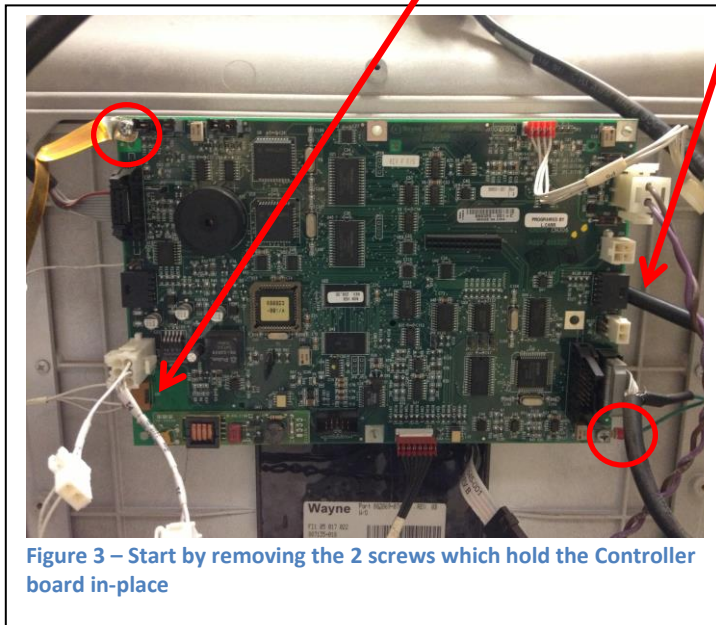
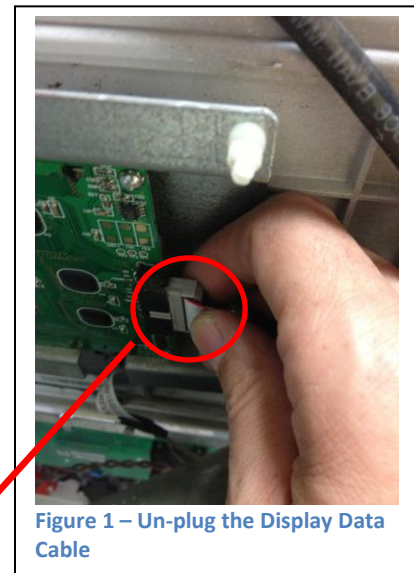
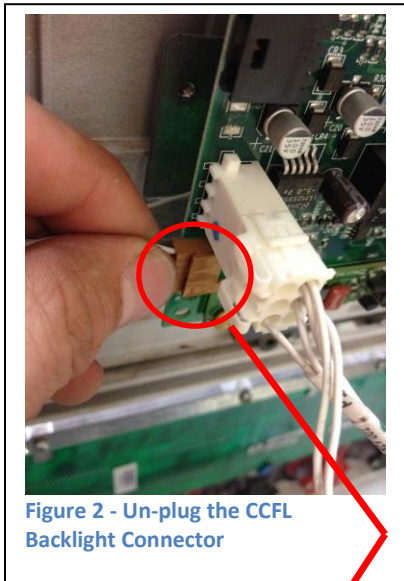
- Observe precautions for handling electrostatic sensitive devices and avoid ESD.

Instructions for Replacing a QVGA Display

(QCAT® in older Ovation® model shown)

1 Begin the installation by opening the dispenser and removing the existing display:

- Un-plug the CCFL Backlight Connector. Note: this will not be used for the new display.
- Un-plug the Display Data Cable.
- Remove the 2 Phillips screws holding the controller board in place. Save these screws. You will need them to reinstall the controller board.
- Carefully pop the controller board off of the plastic standoffs. Note: you may need to pinch the tops of the standoffs to remove the board (see photo).
- Move the controller board out of the way to expose the display.



2

Replacing the old display:

- Remove the 4 Phillips screws shown to remove the old display. These screws can be discarded.
- Remove the protective film prior to mounting the display
- Mount the new display using the 4 Phillips screws provided.

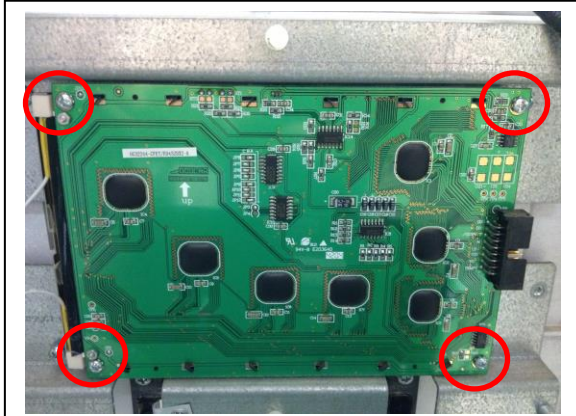


Figure 5 - Removing the old display

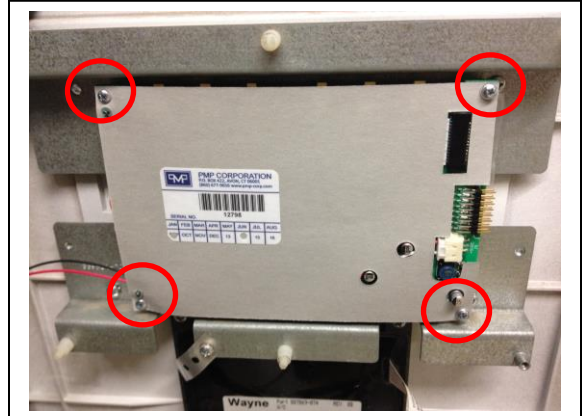


Figure 6 - Attach the new display using the screws provided

3

Re-installing the controller board:

- Remount the controller board reversing steps outlined in Step 1.
- Reconnect any grounding straps or wires that were part of the original installation.

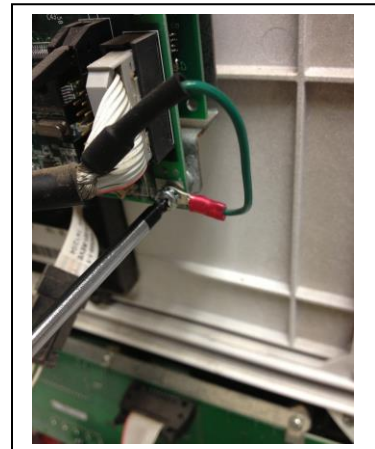
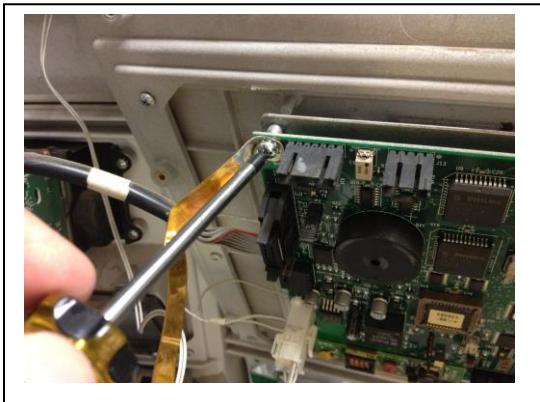
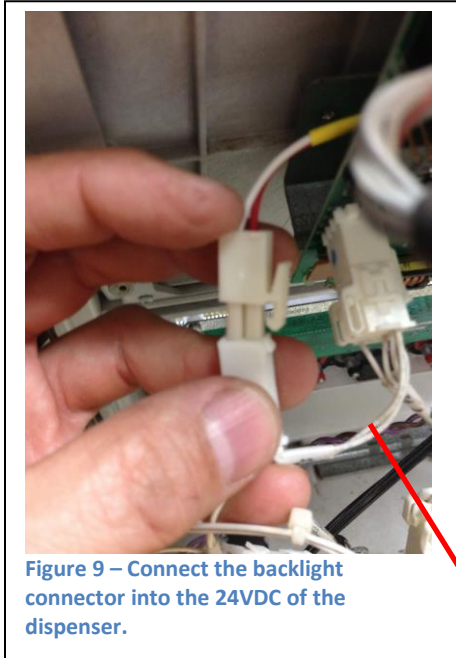


Figure 7 - Be sure to re-attach any grounding straps or wires when completing the installation.

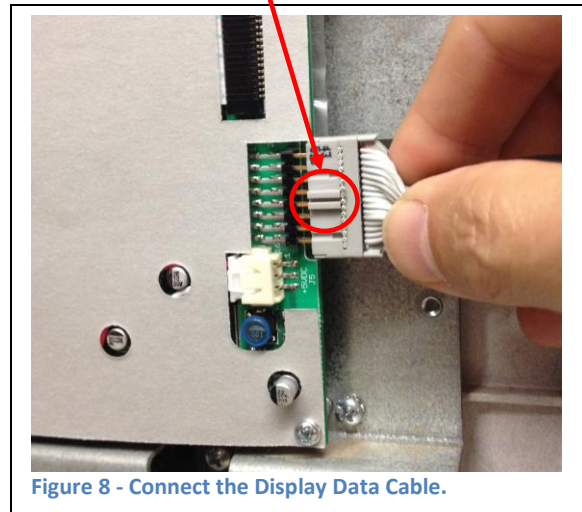
4

Connecting the new display:

- Connect the Display Backlight Connector to the 24VDC available in the dispenser. Depending on the dispenser model, this may require a 24VDC Expansion Cable (Wayne® p/n 892121-001 or equivalent).
- Connect the display data cable. Note that the polarizing feature of the connector should be facing up.



Polarizing feature



Note: This step may require the use of a 24v Expansion Cable (PMP # 62802 or equivalent)

5

Power up the dispenser:

- Power up the dispenser and check the display operation.
- Check for optimal contrast adjustment.
- Adjust the contrast as necessary. Note: the contrast adjustment method will vary depending on the controller board used. Refer to the dispenser manual for detailed instructions.

All product or company's names, trade names, trademarks, parts numbers and part descriptions may be the trademarks of their respective owners, and are used for reference or identification purposes only. PMP does not claim any right to or affiliation with such owners. The PMP product described here is manufactured or remanufactured and sold by PMP and is not the product of any other identified manufacturer.



PMP CORPORATION
P.O. Box 422 • 25 Security Drive
Avon, CT 06001

Local: 860-677-9656
Toll Free: 800-243-6628
Toll Free Fax: 888-674-0196
Web: www.pmp-corp.com
E-mail: sales@pmp-corp.com



© PMP CORP

A Veteran Owned and Managed Company