

IMPORTANT NOTE FOR INSTALLER AND OPERATOR

When replacing a TM-U950 printer in a VeriFone® Ruby™ System...

Do not turn the VeriFone 950 printer “ON” and “OFF”. This will cause the Ruby system to Shutdown or Reboot when powered with a Power Brick.

This printer is shipped with the power switch in the “ON” position.

Leave the switch in the “ON” position when applying power to the system.

1. Disconnect the AC power from the Power Brick. This can be done at the Power Brick or at the wall outlet.
2. Do not disconnect and reconnect the “Y” cable from the Power Brick with the AC power connected.
3. Connect the replacement printer
 - a. Plug the round connector from Power Brick into back of printer.
 - b. Plug the communications cable with blue connector into back of printer.
4. Verify the printer switch is in the “ON” position.
5. Only now - reconnect the AC power to the Power Brick.

Problem: Ruby system shuts down or reboots.

Solution: Power the VeriFone 950 with its own power supply!

PMP # 68910 – PS-180 Power Supply powers only the printer. It allows the printer to be turned on and off without powering down or rebooting the entire Ruby System.

See the enclosed Installation Instructions for the PS-180, PMP Form #150.

For Technical Assistance call 1-800-243-6628

All manufacturers' numbers, names, trade names, trademarks and descriptions used here are for reference purposes only. None of the rebuilt items listed here are the products of the identified manufacturers.



PMP Corporation
Avon, CT 06001

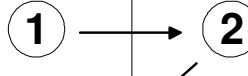
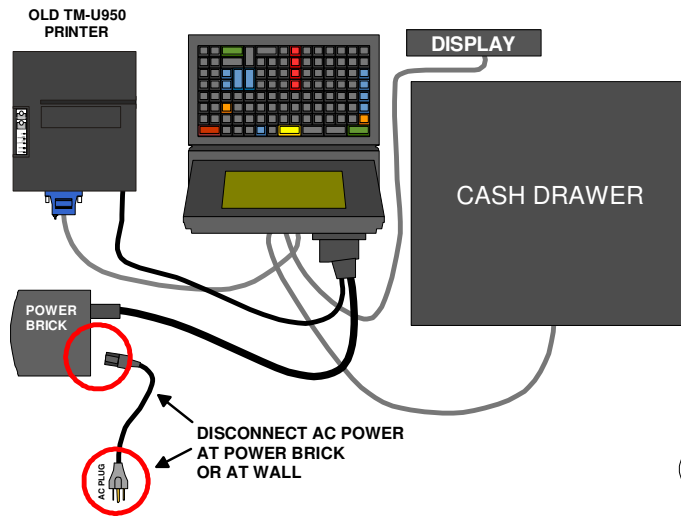
Tel: 860-677-9656

Fax: 860-674-0196

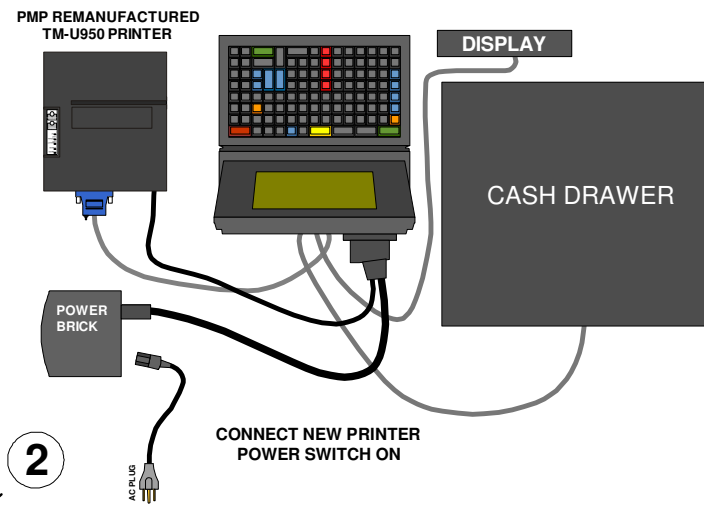
Website: www.pmp-corp.com

FOLLOW THESE STEPS (1, 2, 3) WHEN REPLACING TM-U950 PRINTER

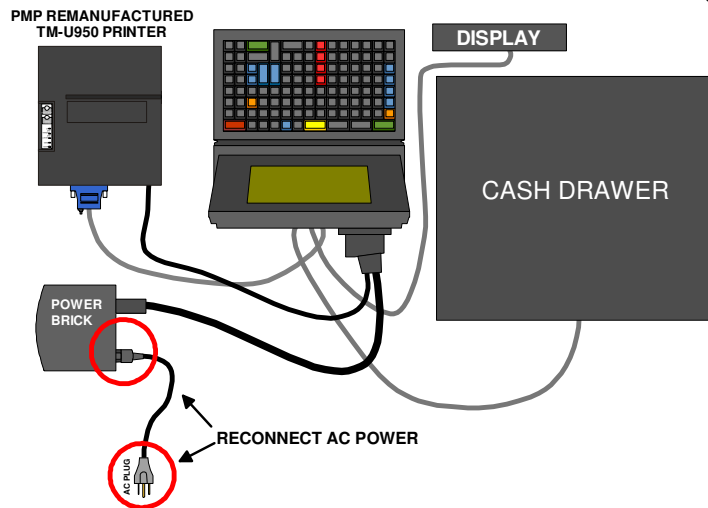
STEP 1



STEP 2



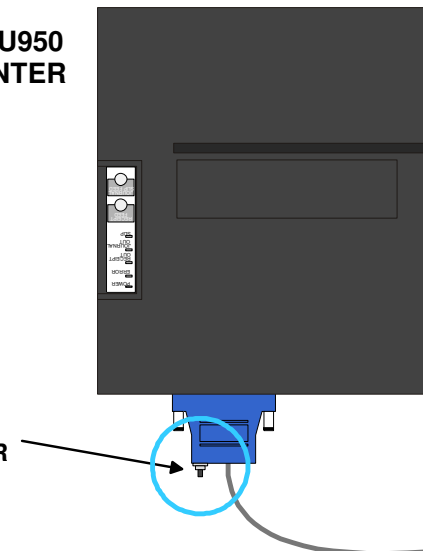
STEP 3



TO RUN A SELF-TEST OR RESET:

TM-U950 PRINTER

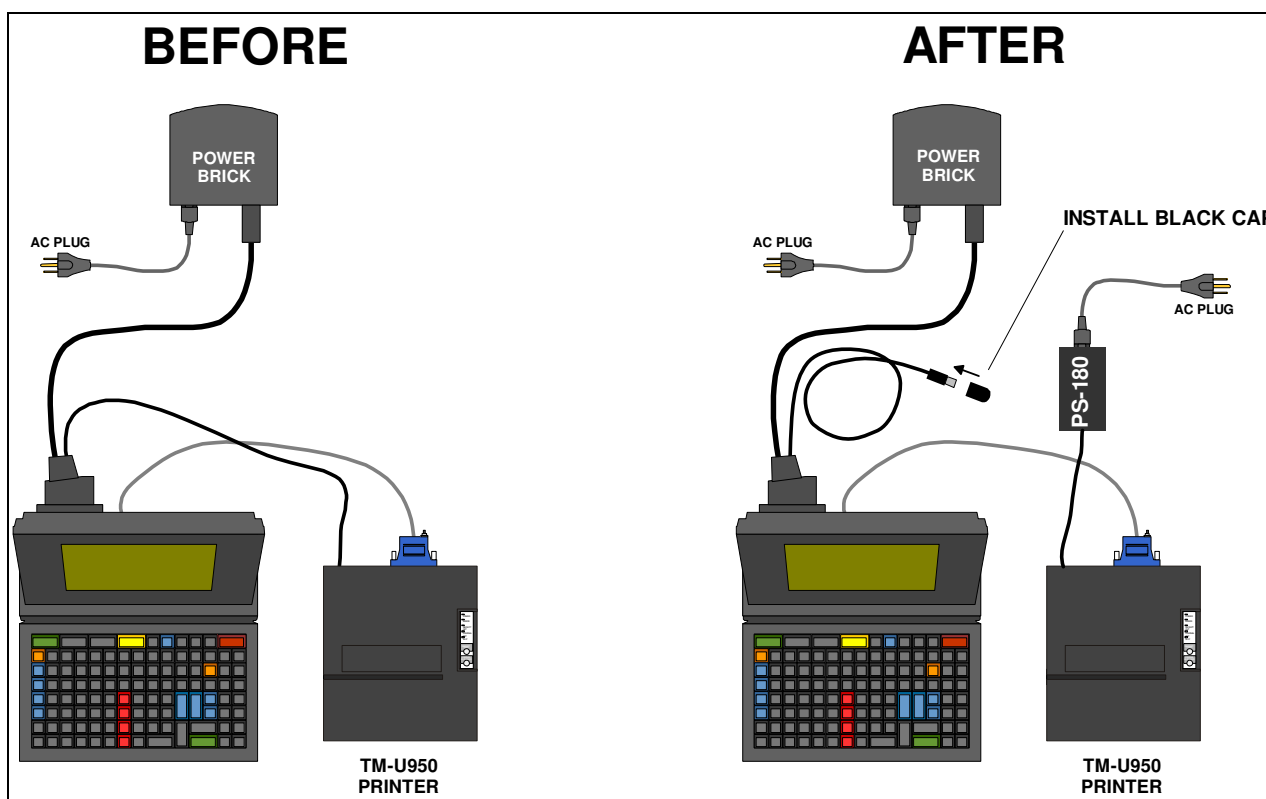
TO RUN A SELF-TEST OR RESET PRINTER, USE RESET BUTTON ON THE BLUE CONNECTOR INSTEAD OF CYCLING POWER WITH THE PRINTER POWER SWITCH



Installation Instructions for PS-180 Power Supply – PMP # 68910

Separate Power Supply for VeriFone 950

1. Remove the power cable coming from the Ruby Power Brick to the VeriFone 950 printer. When removing the power cable, be sure to pull the slip ring towards you first.
2. Install the supplied black cap plug over the end of round DIN connector that was removed.
3. Install the power cable that is hard wired from the PS-180 power supply into the same location where you just removed the round DIN connector from the Power Brick.
4. Plug AC power cord of the new PS-180 Power Supply into the wall AC outlet.
5. Verify the printer switch is in the “On” position.
6. Once the 950 printer is powered by its own PS-180 Power Supply the printer can be turned on and off without powering down the entire Ruby system.



Installation Instructions for PS-180 Power Supply – PMP # 68910