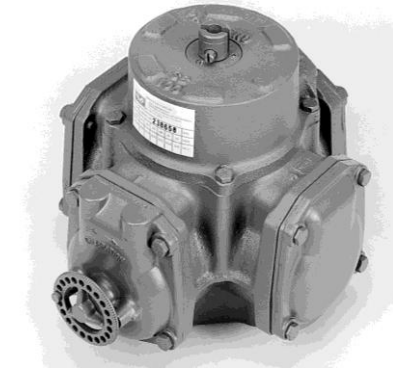




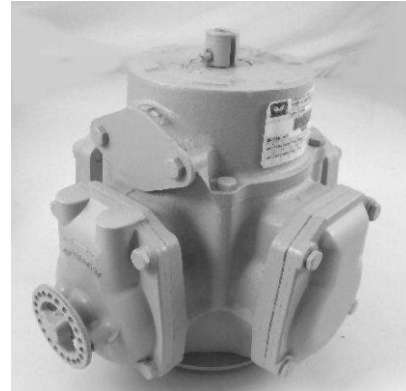
## PMP Remanufactured Bennett® SB100 Meters

Alternate orientation of dome and outlet

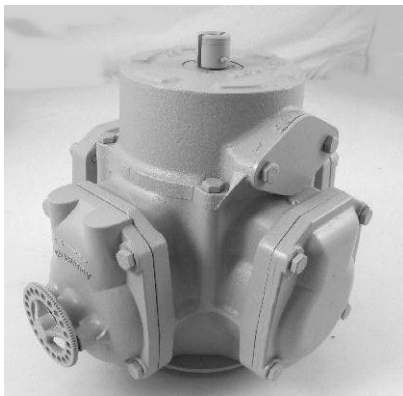
There are some SB100 meters with a different dome (outlet) orientation relative to the calibration dial. The outlet orientation is indicated by adding a suffix A, B, C, or D to the PMP part number. PMP can then ship the meter with the correct outlet orientation to you. "A" is the standard orientation. All versions use the same installation kit. Cores are interchangeable.



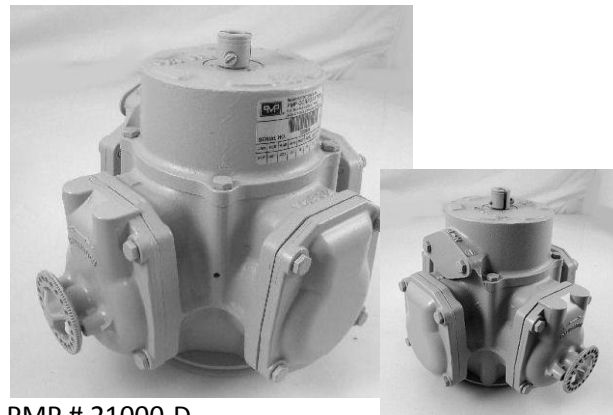
PMP # 21000-A  
Bennett # 101187  
Orientation A "Standard"  
with the calibration dial facing you,  
the OUTLET faces AWAY (opposite side)



PMP # 21000-B  
Bennett # 101199  
Orientation B  
with the calibration dial facing you,  
the OUTLET also faces TOWARD you



PMP # 21000-C  
Bennett # 101197  
Orientation C  
with the calibration dial facing you,  
the OUTLET faces to the RIGHT



PMP # 21000-D  
Bennett # 100454  
Orientation D  
with the calibration dial facing you,  
the OUTLET faces to the LEFT

All manufacturers' numbers, names, trade names, trademarks and descriptions used here are for reference purposes only. None of the rebuilt items listed here are the products of the identified manufacturers. All registered names and trademarks are the property of the manufacturer.

### PMP CORPORATION

P.O. Box 422 • 25 Security Drive  
Avon, CT 06001  
E-mail: [sales@pmp-corp.com](mailto:sales@pmp-corp.com)

Local: 860-677-9656

Toll Free: 800-243-6628

Toll Free Fax: 888-674-0196

Web: [www.pmp-corp.com](http://www.pmp-corp.com) © PMP CORP.