



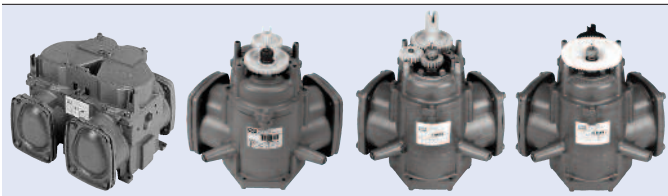
PMP
CORPORATION

PMP Remanufactured Wayne® Equipment



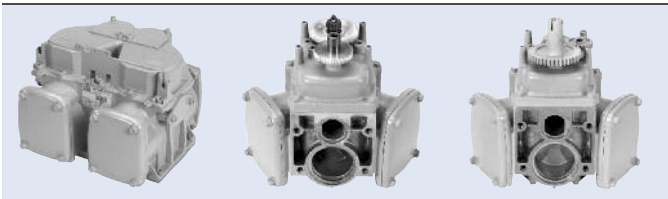
Wayne Meters

MFG#	DESCRIPTION	PMP#
001-048015 008-048015	iMeter™ flat inlet, 2 side	26034
001-048036 007-048036	iMeter flat faced inlet flange, 1 side (left / A)	26036
001-048016	iMeter flat inlet, 1 side (right / B)	26033
001-047915 003-047915	iMeter O-ring inlet, 2 side	26032
001-047916	iMeter O-ring inlet, 1 side (right / B)	26031
23-39310	2PM-6K electronic — gallons	26003
52-39310	2PM-6-52 electronic Hi-Speed — gallons	26004
48-39310	2PM-6-48 electronic — liters	26000
46378	2PM-4/-5/-6 (for mechanical pumps)	26002
002-39310	2PM-4C /-5C /-6C — Imperial gallons	26006
004-39310	2PM-4D/-5D/-6D (blend)	26007



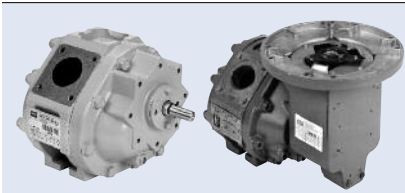
Wayne Meters for Ultra Low Sulfur Diesel

MFG#	DESCRIPTION	PMP#
	iMeter for diesel	26034-D
	2PM Hi-Speed for diesel	26004-D
	2PM for diesel mechanical dispensers	26002-D



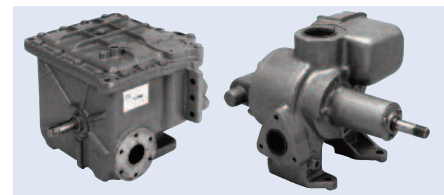
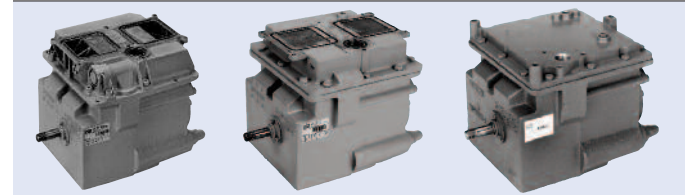
Wayne LC® Meters

MFG#	DESCRIPTION	PMP#
888461-001 / P9559	M5 for Select™, Ultra High Capacity	28018
888921-001 / P9561	M5 2-screw dust cover	28014



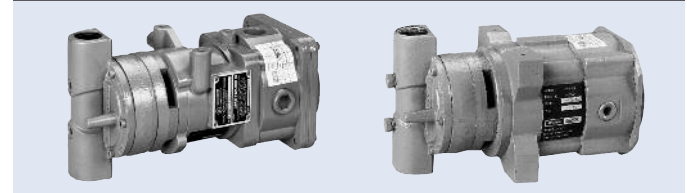
Wayne Pumping Units

MFG#	DESCRIPTION	PMP#
889938-001	Compact pumping unit (Reliance™)	26040
001-048018	Compact pumping unit (2/Vista™)	26030
004-047579	Compact pumping unit (Vista, Century™)	26024
23-44059	Compact pumping unit — hi-capacity, threaded inlet	26022
22-44059	Compact pumping unit — standard, threaded inlet	26021
16-44059	Compact pumping unit — hi-capacity, 3 bolt flanged inlet	26023
15-44059	Compact pumping unit — standard, 3 bolt flanged inlet	26019
x-41916	511 pumping unit "Kidney"	26020



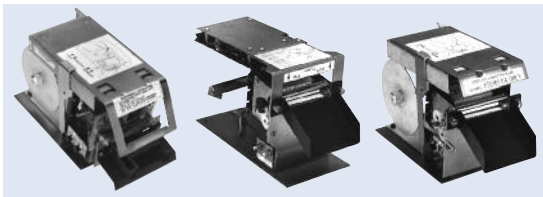
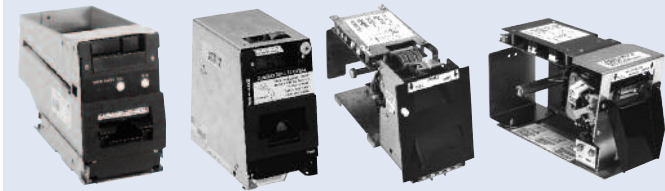
Wayne Vapor Recovery Pumps

MFG#	DESCRIPTION	PMP#
2-300341	Blue with 3/4" NPT	51290
300341	Green with 1/2" NPT	51291



Wayne In-the-Pump Printers

MFG#	DESCRIPTION	PMP#
891687-001	DW-10 Ovation® printer	68612
889022-R02	Ovation R02 "clamshell" printer	68611
883543-R01	CATS™ printer — Vista™ tear bar	68609
881298-R02	CATS printer — Vista robust	68608
850030-R01	CATS printer — solenoid cut	68607
881298-R01	CATS printer — Vista rotary cut	68606
850030-R04	CATS printer — rotary cut	68605



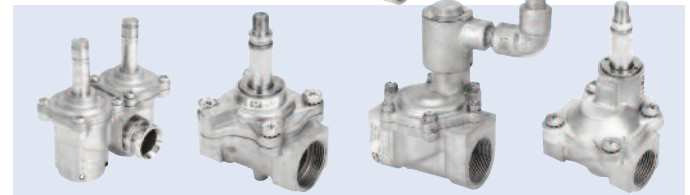
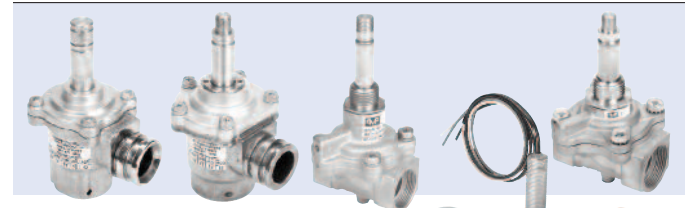
Wayne Journal & Receipt Printers

MFG#	DESCRIPTION	PMP#
887842-001	IBM® Suremark® 4610 printer	68635
886595-R01	Plus™ Olivetti® PR-4	68626
880228-R01	Plus Olivetti WP/RJ printer	68625
RTP 2400	2400 RTP printer	68600
RTP 2400	Citizen® 3550 2400 4-pin cable to emulate 2400 - Remfg	68354
RTP 2400	Citizen 3550 2400 4-pin cable to emulate 2400 - New	68352



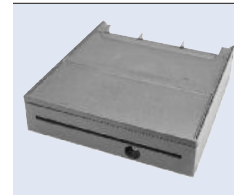
Wayne Valves

MFG#	DESCRIPTION	PMP#
890568-001	Proportional used in 3/Vista® & Ovation	26077
890569-001		
890570-001		
890523-001		
001-302005	Proportional used in 3/Vista & Ovation	26076
888425-001		
888425-002		
002-301031	2-Stage used in 1/Vista & 2/Vista	26075
003-301031		
002-301142	Proportional used in 2/Vista	26074
890574-001	Twin Proportional Valve (1-inlet and 2-outlets)	26073
890584-001		
890587-001		
001-201933	Proportional used in 1/Vista (2PM meter)	26072
888929-001	1 1/2" Hi-Flow, 2-Stage w/coil & conduit	26071
888929-002		
888975-001		
001-301730	Single Stage used in 1/Vista (with 2PM meter) & 2/Vista 590 Dispenser	26070



Wayne Cash Drawer

MFG#	DESCRIPTION	PMP#
887831-001	Nucleus IBM SurePos™ — all plastic	45517





PMP CORPORATION



— Reliability since 1950 —

PMP CORPORATION

OUR BUSINESS is remanufacturing gasoline station equipment.

OUR MISSION is to provide remanufactured products that *perform better than new.*

OUR VISION is to provide exceptional service, superior performance, at reasonable prices.

All manufacturers' numbers, names, trade names, trademarks and descriptions used here are for reference purposes only.

None of the rebuilt items listed in this document is the product of the identified manufacturers.

All registered names and trademarks are the property of the manufacturer.

PMP products and services are available from distributors throughout the United States, Canada, Mexico and other countries around the world.



PMP CORPORATION



©2011 PMP Corporation
5M.9.11
Form No. 170
Printed on recycled paper

PMP Corporation
P.O. Box 422
25 Security Drive
Avon, CT 06001
U.S.A.

Toll Free Phone (800) 243-6628
CT Phone (860) 677-9656
Toll Free Fax (888) 674-0196
CT Fax (860) 674-0196
E-mail sales@pmp-corp.com
Website www.pmp-corp.com

