

Remanufactured by PMP VeriFone® Power Supplies



PS-180 Power Supply

MFG#	PMP#
—	68910

A separate power supply for VeriFone® 950 printers. *See back page.*



Sapphire™ III Power Supply

MFG#	PMP#
CPS212132-3A-R	68903

DC power cord connected to case
DC connector — DB15



Sapphire® Power Supply

MFG#	PMP#
UP13212010	68904

DC power cord connected to case
DC connector — DB15



Topaz™ Power Supply

MFG#	PMP#
CPS12496-3A 999-PCS-10105	68905

DC power cord connected to case
DC connector — round 3-pin DIN



Ruby™ Power Brick

MFG#	PMP#
UP10515010	68901

DC power cord removable
DC power cord not included
DC connector — round 14-pin DIN



Power Supply Wall Bracket

MFG#	PMP#
—	68906

Raises power supply off floor for protection from dust which helps extend life of power supply.

- *Remanufactured and tested under load.*
- *Fast turn-around.*
- *One-year warranty from date of installation.*

All manufacturers' numbers, names, trade names, trademarks and descriptions used here are for reference purposes only.

None of the rebuilt items listed in this document is the product of the identified manufacturers.

All registered names and trademarks are the property of the manufacturer.

PMP products and services are available from distributors throughout the United States, Canada, Mexico and other countries around the world.



NEW
from PMP!

PS-180 Power Supply

A SEPARATE POWER SUPPLY FOR
VERIFONE® 950 PRINTERS

PS-180 Power Supply
PMP #68910



PROBLEM:

- Does your Ruby™ system shutdown?
- Does your Ruby system reboot?
- Do your operators turn the printer off and on which causes the system to power down?
- Do you have to leave the VeriFone 950 printer on all the time to keep the system from powering down?

SOLUTION:

Power the VeriFone 950 printer with its own power supply!

Compatible with the following printers:

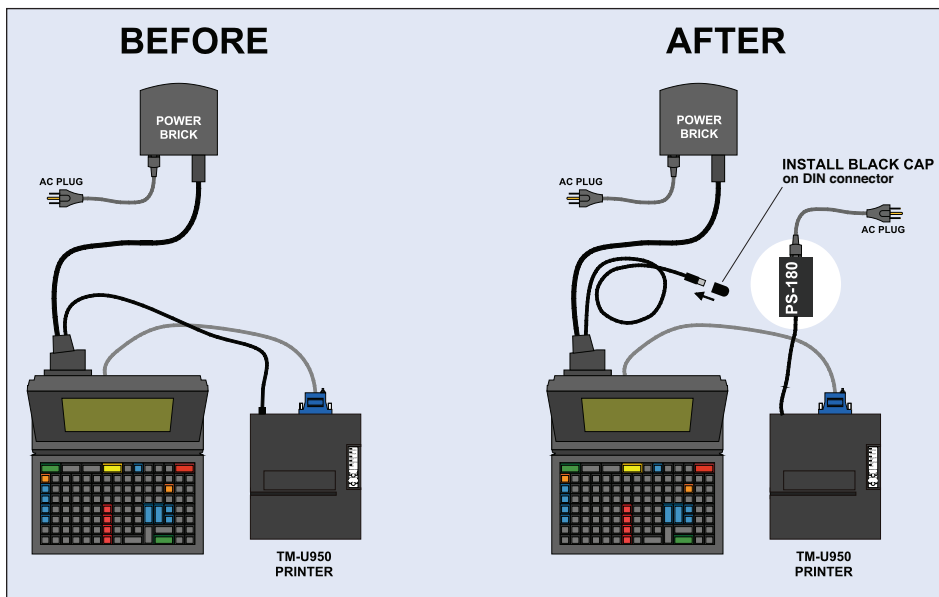
- | | |
|----------------------|--------------------------|
| Epson® TM-U950 | Epson TM-U300 series |
| Epson TM-T88 series | Epson TM-U290/295 series |
| Epson TM-U200 series | Epson TM-T90 series |

- Supplied with power cord. (not shown)
- One-year warranty from date of installation.

Installation Instructions

Adding the PS-180 Power Supply is simple.

Remove the power cable coming from the Ruby Power Brick to the VeriFone 950 printer. When removing the power cable, be sure to pull the slip ring towards you first. Install the supplied black cap plug over the end of round DIN connector that was removed.



Remove the power cable coming from the Ruby Power Brick to the VeriFone 950 printer. When removing the power cable, be sure to pull the slip ring towards you first. Install the supplied black cap plug over the end of round DIN connector that was removed.

Install the power cable that is hard wired from the PS-180 power supply into the same location where you just removed the round DIN connector from the Power Brick.

Plug AC power cord of the new PS-180 Power Supply into the wall AC outlet. Verify the printer switch is in the "On" position.

Once the 950 printer is powered by its own PS-180 Power Supply, the printer can be turned on and off without powering down the entire Ruby system.