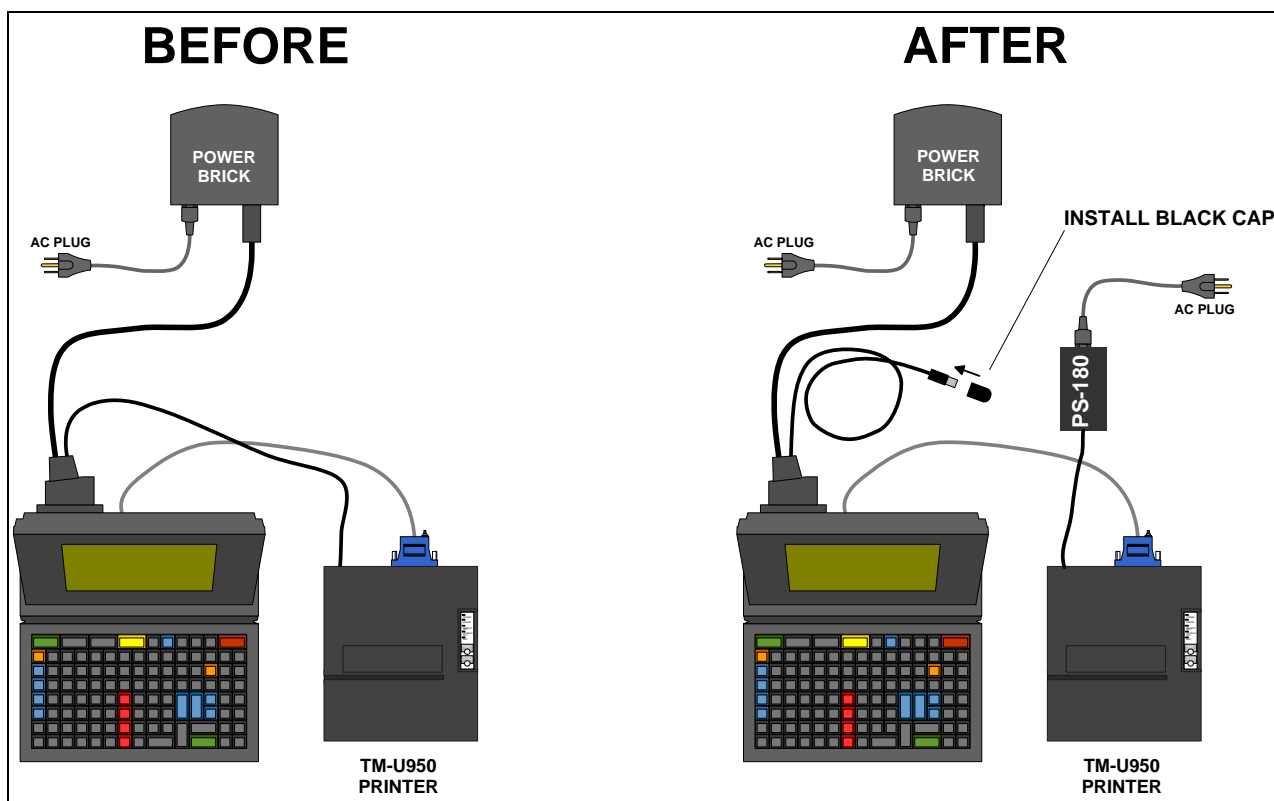


Installation Instructions for PS-180 Power Supply – PMP # 68910

Separate Power Supply for VeriFone 950

1. Remove the power cable coming from the Ruby Power Brick to the VeriFone 950 printer. When removing the power cable be sure to pull the slip ring towards you first.
2. Install the supplied black cap plug over the end of round DIN connector that was removed.
3. Install the power cable that is hard wired from the PS-180 power supply into the same location where you just removed the round DIN connector from the Power Brick.
4. Plug AC power cord of the new PS-180 Power Supply into the wall AC outlet.
5. Verify the printer switch is in the “On” position.
6. Once the 950 printer is powered by its own PS-180 Power Supply the printer can be turned on and off without powering down the entire Ruby system.



Installation Instructions for PS-180 Power Supply – PMP # 68910