

Directions for Changing the Price on VR-10 Computers  
From \$2.xxx/Gallon Price Range to \$3.xxx/Gallon Price Range  
(1/10¢ Price Increment)

**Warning:** The following instructions are ONLY for changing the price per gallon from the \$2.000-\$2.999 range to the \$3.000-\$3.999 range on a VR-10 computer using 1/10¢ price increments. For whole cent pricing and other VR-10 pricing configurations please refer to the document titled [Price Setting Instructions for VR-10 Computers](#) located on the [www.pmp-corp.com](http://www.pmp-corp.com) website.

- 1) Set 10 cent, 1 cent, and 1/10 cent price display wheels to the desired price by positioning and fully engaging the three range arms (Figure 1a).

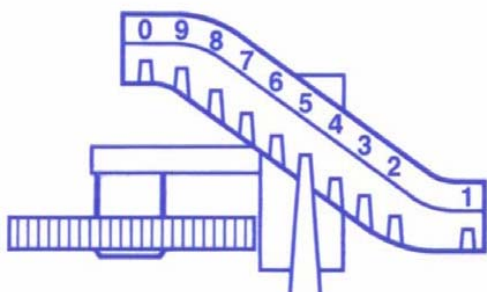


Figure 1a: Range Arm



Figure 1b: Dollar Shift Lever  
(In "200" Position)

- 2.) Check that the dollar shift lever is in the "200" position (the left most stud). If shift lever is not in the "200" position then remove cotter pin, lift up the shift lever and shift to the "200" position. Make sure shift lever is fully seated in "200" position, then install cotter pin (Figure 1b).
- 3.) Locate the colored gear stack (black, red, white and green colored gears) (see Figure 2a for reference). Remove cotter pin, all colored gears, and washer from the mounting post. Set aside these components until step five.
- 4.) Locate the dollar drive shaft. It is adjacent to the post the colored gear stack was mounted on (see Figure 2b). Remove the cotter pin and slide the spacer up the dollar drive shaft and hold it there. Remove the dollar drive shaft vertical pin and tape it to the top of your computer. Lower the spacer and reinsert the cotter pin and secure it.

**NOTE:** Dollar drive shaft gear may be either zinc metal or black plastic.

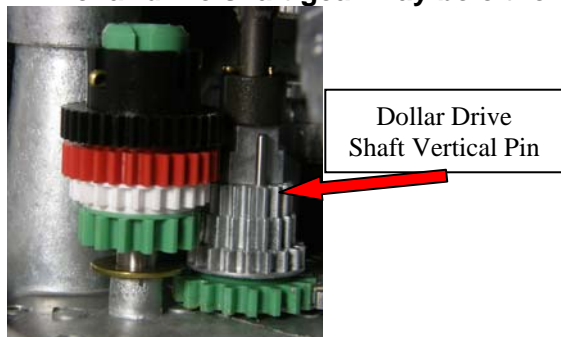


Figure 2a: Colored Gear Stack

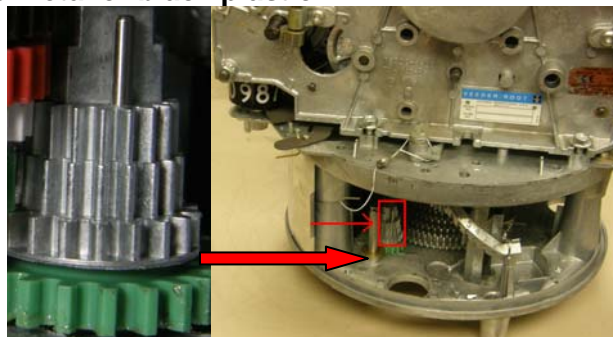


Figure 2b: Dollar Drive Shaft Gear Location



**PMP CORPORATION**  
P.O. Box 422 • 25 Security Drive  
Avon, CT 06001

Local Tel: 860-677-9656  
Local Fax: 860-674-0196  
Email: [sales@pmp-corp.com](mailto:sales@pmp-corp.com)



5.) Restack the colored gear set onto post by doing the following:

- a. Place the green gear with the hub facing up (gear teeth down) onto the metal post. Place the white gear with the hub up on top of the green gear. Place the black gear with the hub facing down on top of the white gear. Place the red gear with the hub facing up on top of the black gear.
- b. Place the washer on top of the red gear and insert the cotter pin through the hole in the top portion of the shaft. Secure the cotter pin (see Figure 4b).



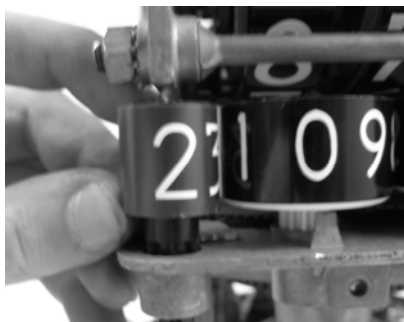
**Figure 4a: \$2.000 - \$2.999  
Configuration**



**Figure 4b: \$3.000 - \$3.999  
Configuration**

6.) Move the dollar price wheel to the "3" position on both the front and back displays of the computer by doing the following:

- a. Remove the cotter pin.
- b. Lift the wheel and turn it from the "2" position to the "3" position.
- c. Lower the wheel and replace the cotter pin.



**Dollar Price Wheel set  
for \$2.000 - \$2.999**



**Dollar Price Wheel set  
for \$3.000 - \$3.999**



**PMP CORPORATION**  
P.O. Box 422 • 25 Security Drive  
Avon, CT 06001

Local Tel: 860-677-9656  
Local Fax: 860-674-0196  
Email: sales@pmp-corp.com

